



15 Hour Private Jet Card

Absolutely no additional costs (no dead head charges, repositioning or taxi-time).

Jets.com

[Open >](#)

Banking & Financial Services

Central Insurance to become the largest office user at Bridge Park following Dublin move

[Email](#) [Share](#) [in Share](#) [Tweet](#) [Share Article](#) [Print](#) [Order Reprints](#)



A Northwest Ohio-based company is moving its Dublin location to Bridge Park, where it will become the largest office user at the prominent development.

LAUREN THOMPSON | NELSON WORLDWIDE



By **John Bush** - Staff reporter, Columbus Business First
Jan 30, 2023

IN THIS ARTICLE

Commercial Real Estate
Industry

Property & Casualty Insurance
Topic

Recruiting & Hiring
Topic

A Northwest Ohio-based insurance company is moving its Dublin location to Bridge Park, where it will become the largest office user at the prominent development.

Central Insurance, a property and casualty insurance carrier headquartered in Van Wert, will relocate its Central Ohio technology office from 425 Metro Place N. to 6620 Mooney St. in Dublin. The 48,322-square-foot office will span an entire block and will be situated within a mix of condos and retail stores at Dublin's Bridge Park, according to a news release.

[VIRTUAL EVENT] FUTURE OF CITIES 3.0

Premium Users Get Free Admission

USE PROMO CODE MemberFOC23

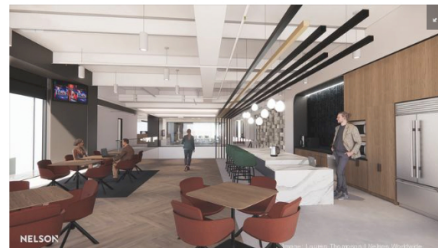
[SAVE MY SPOT](#)

The insurance company's current office measures 10,000 square feet, so it will nearly quintuple its footprint with the move to Bridge Park.

Central Insurance will create approximately 60 jobs as a result of the move. Those positions are expected to be filled by the end of 2026, adding to the agency's current workforce of 79 Dublin employees.

Central Insurance President and CEO Evan Purmort said the Bridge Park location is designed to accommodate growth of the company's Central Ohio operation.

"Central Ohio is a rapidly evolving business and tech hub, and moving to Bridge Park directly aligns with our vision for the future of the organization," Purmort said in the news release. "The new Bridge Park location...provides a more functional, upgraded space with state-of-the-art amenities that expand our ability to innovate and deliver on the exceptional hospitality Central Insurance is known for."



A cafe is among the amenities Central Insurance will gain from its move to Bridge Park.

LAUREN THOMPSON | NELSON WORLDWIDE

Central Insurance partnered with Nelson Worldwide to personalize the space, as well as Bridge Park owner and developer Crawford Hoying. Construction on the new office is underway, and an official opening is expected this winter.

"We are proud that the employees of Central Insurance selected Bridge Park for the location of their expanded office due to its walkability to restaurants, shopping and outdoor recreation," Crawford Hoying Principal Bob Hoying said in the release. "Central Insurance will be the largest office-space user at Bridge Park, and we look forward to its employees adding to the vibrancy of the



RECOMMENDED

GOVERNMENT & REGULATIONS

NTSB report: Plane in crash that killed Raleigh-based bank CEO 'was not to be flown'



COMMERCIAL REAL ESTATE

Plans solidify to replace old hospital with 2 apartment towers packed with public amenities



RESIDENTIAL REAL ESTATE

Downtown's most expensive condo drops nearly half-million dollars from asking price: Slideshow



community.'

Central Mutual Insurance Company was founded in Van Wert in 1876, and has since evolved into Central Insurance – a property and casualty insurance carrier providing coverage for hundreds of thousands of individuals and businesses across the country. The company has combined assets of more than \$2 billion.

In addition to its Van Wert headquarters, Central Insurance operates regional offices in Boston, Atlanta and Dallas, as well as satellite locations in Dublin and Salt Lake City.

RELATED CONTENT

Sublease space is surging in Columbus. Is that a problem?



Dublin considers \$9M purchase to construct bridge over I-270



Large condo tower planned as part of Dublin hotel-restaurant project



Why Cameron Mitchell is getting into the hotel business



Here's why Crawford Hoying is building a third hotel at Bridge Park



SPONSORED CONTENT BY THE BUSINESS JOURNALS CONTENT STUDIO

The B2B quick guide to online reputation management



Latest BizSpotlight

[More >](#)

FINANCIAL SERVICES

River Tree Wealth ...

General News

Northwestern Mutual – Columbus announced today that wealth management advisor Shawn Phelps has been appointed by The Village Network (TVN), an experie...

BEST PLACES TO WORK FEATURED

ENVISAGE WEALTH

FINANCIAL SERVICES

Envisage Wealth

Award Winner

Our mission has one objective, to help our clients fulfill their boldest and most fundamental dreams through highly personalized financial solutions. ...

BEST PLACES TO WORK FEATURED

Clarus R+D

TECHNOLOGY

Clarus R+D

Award Winner

Clarus R+D is proud to be a finalist for the 2022 Best Places to Work award. We strive everyday to be a people-first organization, and believe that cr...

Your People are Your Biggest Investment

Find out how **People On The Move** boosts your company culture and influence.

THE BUSINESS JOURNALS

[LEARN MORE >](#)

SPONSORED CONTENT BY BIZLEADS

Best practices for utilizing a sales prospecting tool

4 Signs That a Liver Disease May Be Developing

See The Signs Here [➔](#)

HONDA

The most capable

[LEARN MORE](#)

[Back to Top <](#)

COLUMBUS BUSINESS FIRST

[Home](#) [News](#) [Lists & Leads](#) [People](#) [Companies](#) [Events](#) [Store](#)

SUBSCRIBERS

[Start a Subscription](#)

[Subscriber-Only Content](#)

[Digital Edition](#)

[Book of Lists](#)

[Book of Lists - Unlimited](#)

[Manage your Account](#)

[Manage My Advertising](#)



ABOUT & CONTACT

[About Us](#)

[About The Business Journals](#)

[Advertise](#)

[Help & FAQs](#)

[Circulation Sales Center Directory](#)

APPS & SYNDICATION

[Mobile Apps](#)

[Syndication/RSS](#)

FOLLOW US

[Twitter](#)

[LinkedIn](#)

[Facebook](#)

[Instagram](#)

NEWSLETTERS

[Sign Up Now](#)

ACBJ

[American City Business Journals](#)

[AmericanInno](#)

[BizEquity](#)

[BizLeads](#)

[Bizwomen](#)

[Hemmings](#)